

# TS-3 STRUCTURE

## TS-3 Pit Vehicle Scale

The Tuna TS-3 model is primarily chosen as a mobile scale for areas with limited maneuvering space, but it is also used as a raw material purchase-sale scale at factory entrances and stockyards.

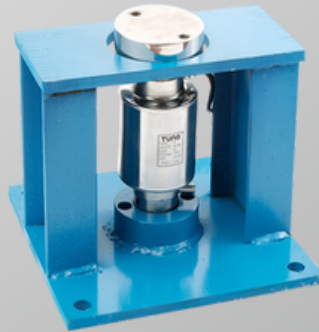
**Mounting Kits:** These have been designed to protect the load cells and their precision against lateral loads when vehicles enter the scale.

**Load Distribution:** The static calculation of the TS-3 scales is carried out according to H20-S16 loading norms. This ensures an equal load distribution to the load cells, allowing for many years of trouble-free use

**Sandblasting:** All surfaces of the TS-3 scales undergo a sandblasting process and are then painted with a highly resistant double-layer paint for outdoor conditions. This provides many years of usage while preventing rust.

**Input, Output and Middle Rubber:** While vehicles enter the scale, mud, gravel, etc. on the wheel. Rubber material is used to prevent the materials from getting stuck between the scales.

### Side Barriers



## ELECTRONIC EQUIPMENT

**TCT and CTD type load cells:** These are OIML R60 certified and heavy-duty load cells that are protected against lateral loads created by vehicles during braking and sudden starts.



**Lightning Protection**



**CTD (Dijital)**



**TCT (Analog)**

**Lateral Loads:** Tuna TCT load cells are more resistant to loads than other S Type cells, since they are not monolithic (Space) and It is UNBREAKABLE.

**Scale Computer and Software:** The scale program, based on Windows, is designed with simplicity for anyone with basic computer skills to use easily. Despite its simplicity, it boasts a powerful database with advanced reporting capabilities.

**Load Cell Cables:** Designed with harsh environmental conditions in mind. PVC outer sheath shows good superior resistance to chemicals. Thanks to its special coating, it is protected against rodents.

